

Upgrade from Nimbus 2 to Nimbus 3

Some comments about installation- and projectfolders

Installation- and projectfolders in Nimbus 3 differs from Nimbus 2

Nimbus 2 installation folder is by default: `C:\Program Files (x86)\Nimbus Alarm Server`

Nimbus 3 installation folder is by default: `C:\Program Files (x86)\TroSoft\Nimbus Alarm Server 3`

Nimbus 2 project folder is by default: `C:\Program Files (x86)\Nimbus Alarm Server\Project`

Nimbus 3 project folder is by default: `C:\ProgramData\TroSoft\Nimbus Alarm Server 3\Project`

The UAC causes problems when common program data is located beneath the *Program Files (x86)* folder. You may not be allowed editing files there unless you start all programs as *Administrator*.

All program data shared by the users should instead be stored in the `C:\ProgramData` folder.

This is why the Nimbus version 3 project folder has been moved to *ProgramData*. Microsoft has however for some reason chosen to make the *ProgramData* folder hidden. You may need to change your folder options to *Show hidden files, folders, and drives* if you need to see the folder.

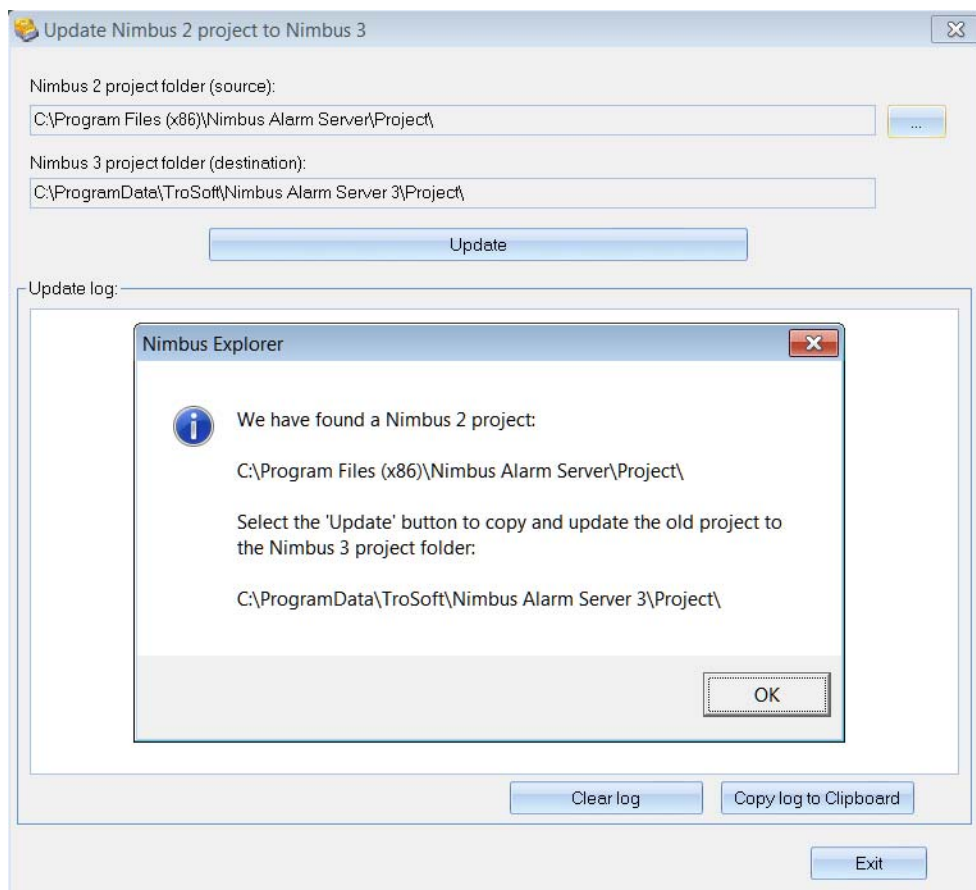
The project folder path used by Nimbus is always shown down right in Nimbus Explorer (see *Tip of the day...* later on)

Upgrading if you have Nimbus 2 installed on the same server

Both Nimbus 2 and Nimbus 3 may coexist on the same server.

Install Nimbus 3 - see *Nimbus3_Install_Instructions.pdf* for installation instructions.

When you start Nimbus Explorer it will automatically scan for an old Nimbus 2 installation and open up the *Update Project* form.



Click *Ok*, ensure the source and destination folders seem right and then click the *Update* button.

The update process steps are written to the system log files and is also presented in the *Update log* list. When update is finished, copy the log to the clipboard if you like and then just exit the *Update* form.

Disable Nimbus 2 server

The Nimbus 2 installation may be left on the server - it will not disturb the Nimbus 3 installation if the Nimbus 2 server application is stopped.

If running as a service

- Stop the service *Nimbus Alarm Server* in *Services*
- Set the service startup mode to *Manual* or *Disabled*.

If not running as a service

- Stop the Nimbus server using Nimbus Explorer 2, *File* -> *Shutdown Nimbus Server* (ensure you run Nimbus Explorer as *Administrator*)
- Ensure any Nimbus Alarm Server shortcuts in the *Startup / Autostart* are removed.

Uninstalling Nimbus 2

Disable Nimbus 2 server as described above.

If running as a service

- In Nimbus Explorer 2, select *Settings* -> *Server Setup* and uncheck the *Run Nimbus Alarm Server as a service* (ensure you run Nimbus Explorer as *Administrator*)
- Close Nimbus Explorer
- Uninstall *Nimbus Explorer and Nimbus Alarm Server version 2.00.xx*

If not running as a service

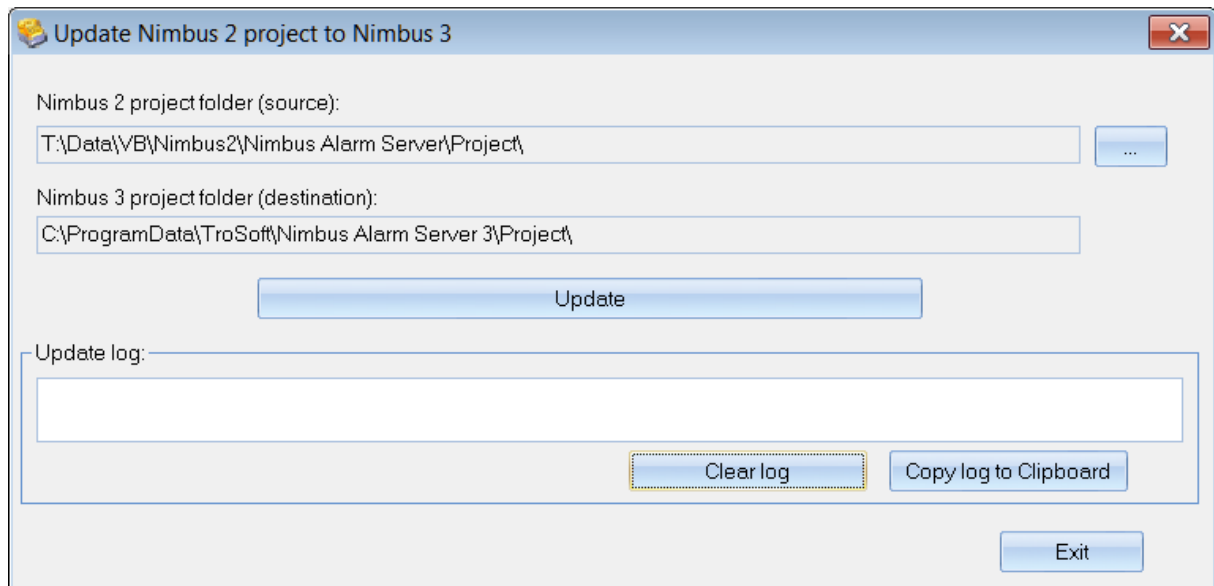
- Close Nimbus Explorer
- Uninstall *Nimbus Explorer and Nimbus Alarm Server version 2.00.xx*

Upgrading if you have Nimbus 2 installed on another server

Ensure you have access to a copy of the old Nimbus 2 Project-folder, either by a network drive, USB or in some other way.

Install Nimbus 3 - see *Nimbus3_Install_Instructions.pdf* for installation instructions.

Start Nimbus Explorer, select language, go to *Setup* -> *Server Setup* -> *Advanced*. Select *Import and upgrade Nimbus 2 project*.



Find the Nimbus 2 project folder (actually the Nimbus_Server.ini file) using the button up to the right. Click the *Update* button.

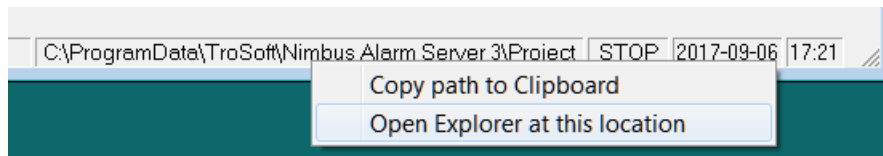
The update process steps are written to the system log files and is also presented in the *Update log* list. When update is finished, copy the log to the clipboard if you like and then just exit the *Update* form.

Obsolete parameters

Have a close look in the *System Log* when starting *Nimbus Explorer / Nimbus Server*, some parameters are no longer valid in version 3 (ex *WatchdogTagName*) since they have been replaced with some improved functions instead.

Tip of the day...

To gain fast access to the Nimbus 3 project folder you right-click the project folder path shown down right in Nimbus Explorer as below (Nimbus Explorer 3 only):



All Nimbus data (users, receivers, profiles, receiver type settings etc) are located in the Project folder. To make a complete backup of you Nimbus configuration you just need to copy the Project folder (and its subfolders).

To avoid future UAC problems with *virtual store*, ensure *Users* have full access to the Project folder. Right click the Project folder in the file explorer, *select Properties -> Security -> Edit*. Select *Users*, ensure *Full control* is checked and click *Ok*