

Install Nimbus in Windows 7, 8, 10, Server 2008, 2012, 2016

Ensure you have administrator privileges (at least belongs to the administrators group) and install Nimbus by running the setup program as administrator (right click and select *Run as administrator*).

The most recent versions of the Nimbus installation program should automatically set two necessary settings to prevent problems with UAC and Windows Virtual Store. If you used some older version or copied the *Project* folder from some other server you should check following:

1. Ensure *Nimbus Explorer* always runs as *Administrator* (see *How to run Nimbus Explorer as administrator*)
2. Ensure the *Project* folder have proper security settings (see *Setting Project folder security settings*)

How to install Nimbus as service

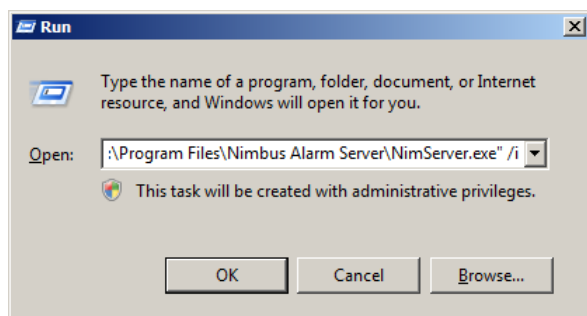
Run *Nimbus Explorer* and select *Setup -> Server Setup -> Run Nimbus Alarm Server as a service*.

Nimbus Alarm Server does not start directly when installed as service, it has to be started using *Service Control Manager* or *Nimbus Explorer*.

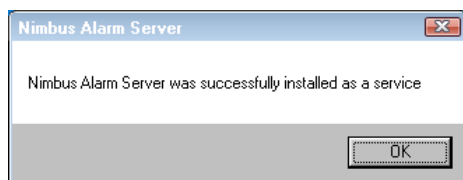
If you cannot install Nimbus as service

If the checkbox *Run Nimbus Alarm Server as a Service* is grayed out or checking it has no effect (it returns to unchecked state) even if above 1 and 2 settings are applied, try the following:

Select *Start-Run*, browse the program '*C:\Program Files (x86)\Nimbus Alarm Server\NimServer.exe*'



Ensure the dialog box says '*This task will be created with administrative privileges*'. Add the */i* command line parameter, select *Ok*. If you cannot create a task with administrative privileges you could start a CMD-box as *Administrator* and run the command line from there.



You will get a message when service installation is complete. *Nimbus Alarm Server* does not start directly when installed as service, it has to be done using *Service Control Manager* or *Nimbus Explorer*.

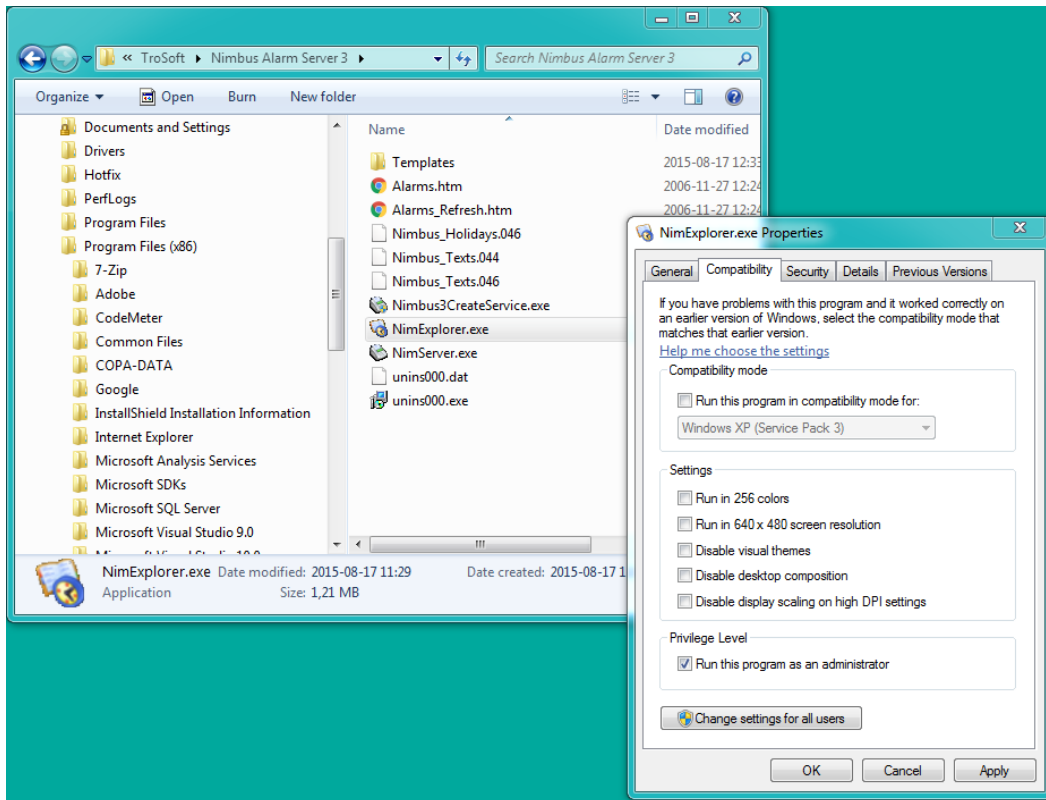
To deinstall the service, use the */u* command line parameter.

You should use the *Service Control Manager* to start and stop the service.

How to run Nimbus Explorer as administrator

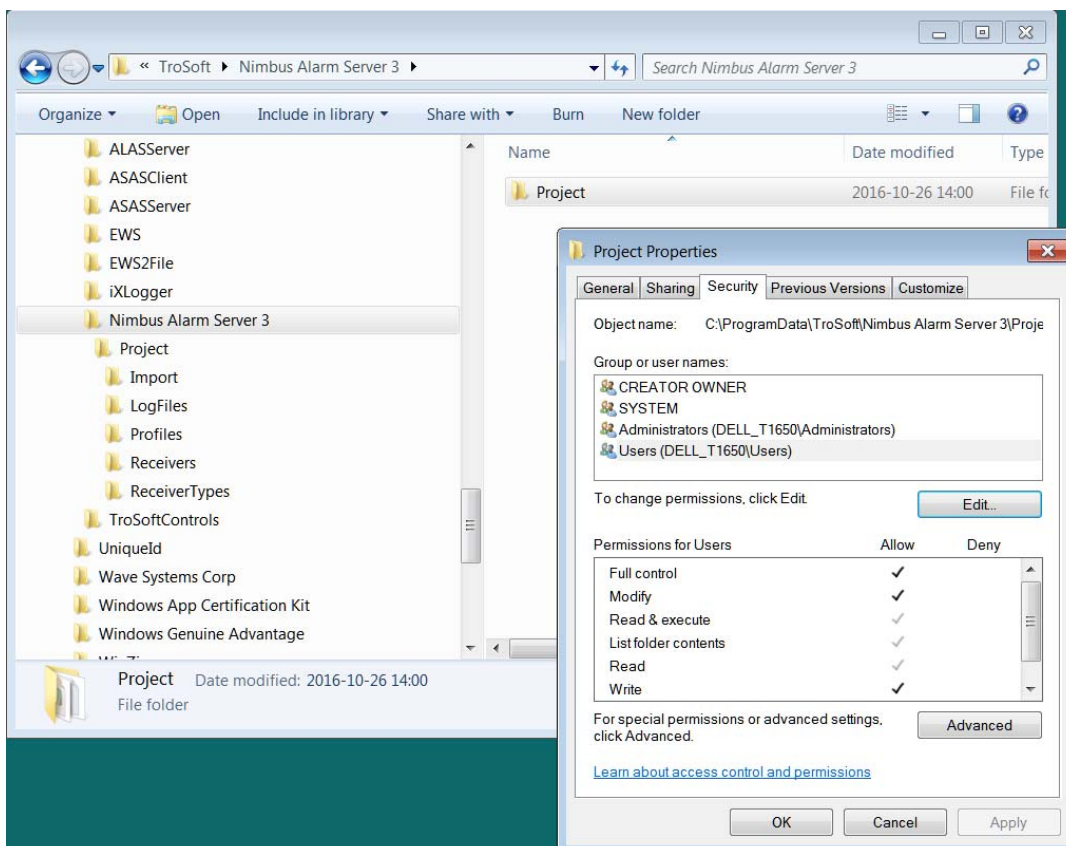
Right click the *Nimbus Explorer* shortcut and select checkbox *Shortcut -> Advanced -> Run as administrator*. Ensure you do this for all *Nimbus Explorer* shortcuts.

In Windows 8 and Server 2012 you must use Explorer and set privileges directly on the *NimExplorer.exe* file as the following example:



Find the *NimExplorer.exe* file, right click and select properties. Check the *Run this program as administrator* box in the Compatibility tab.

Setting Project folder security settings



Find the Project folder, right click and select properties. In the *Security* tab ensure the group *Users* have *Full control* checked. If not, use the *Edit* button to change the settings.