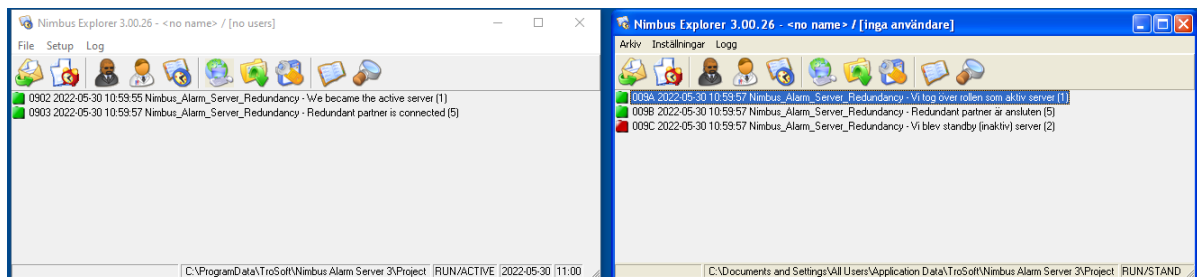
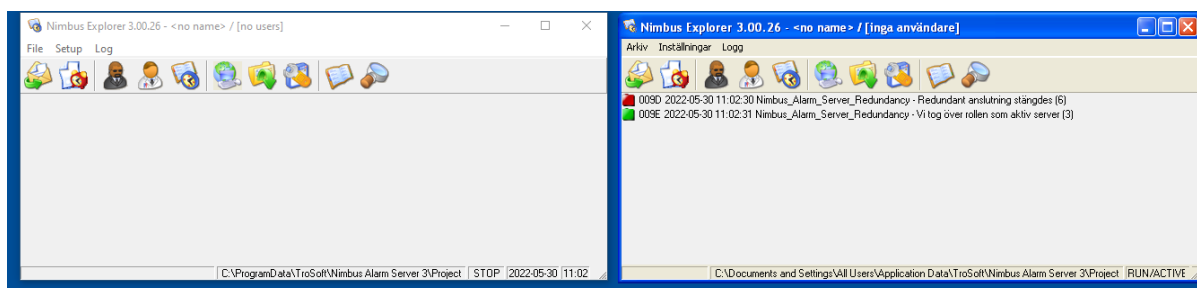


Indikation på switchover vid redundans

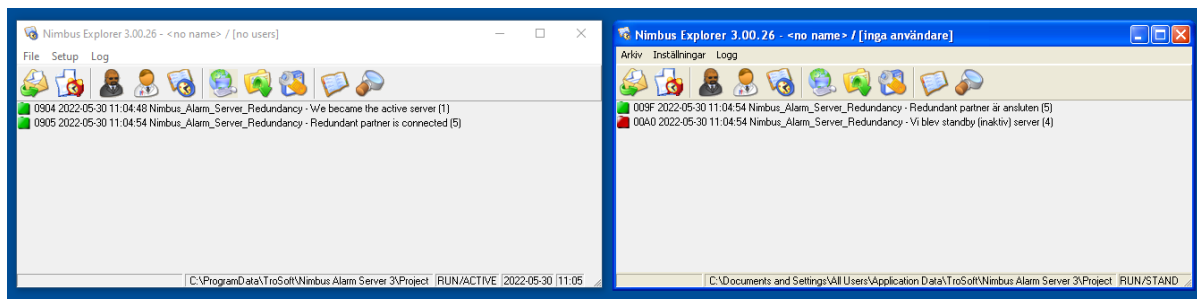
1.Startup samtidigt – Normalläge



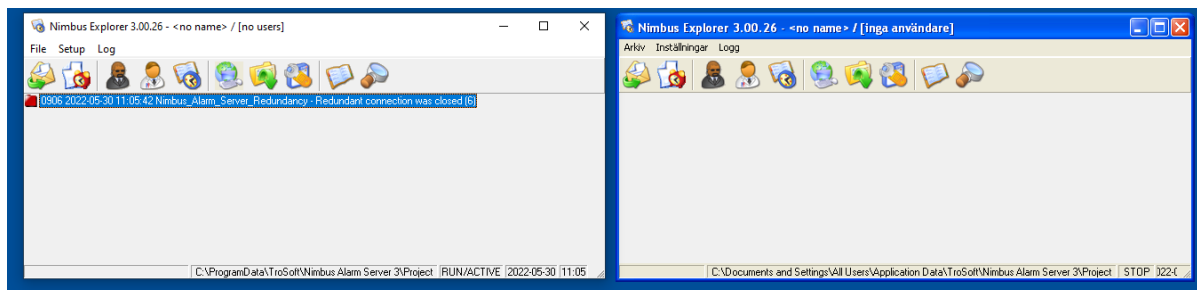
2.Primärserver stoppades



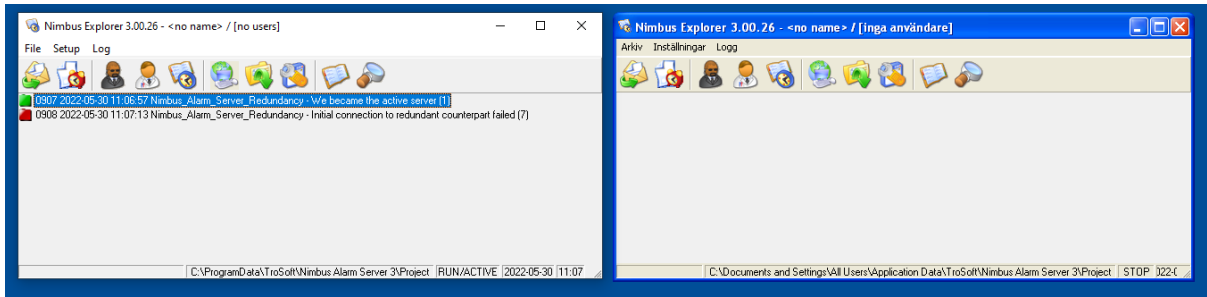
3.Primärserver startad igen



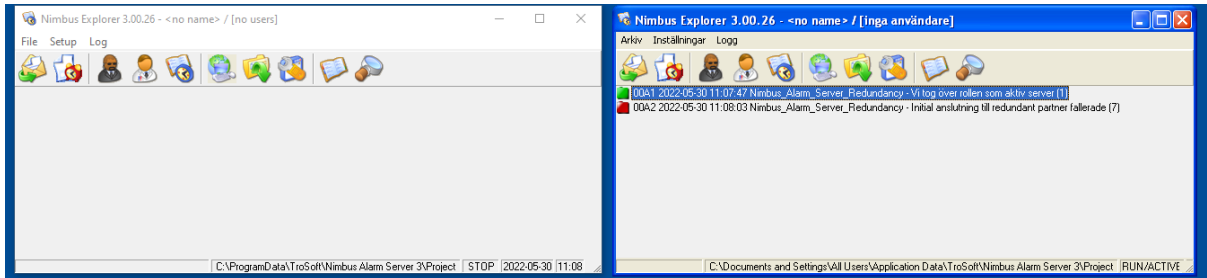
4.Sekundärserver stoppades



5.Primärserver startar men sekundärservern är inte igång



6. Sekundärserver startar men primärservern är inte igång



Siffrorna inom parentes motsvarar urvalskriteriet via parametern *IndicatedReasons*. Den presenteras via formattering med *[ReasonAsNumber]*. Texten presenteras via formattering med *[ReasonAsString]*.

Exempel på inställning i *Nimbus_Server.ini*:

```
;
; If we want a system alarm event when a server active/standby switchover occurs, enter the alarm parameters below. Ex:
;
; AlarmEventAtSwitchOver=Nimbus_Alarm_Server,Nimbus,10,,[ReasonAsString] ([ReasonAsNumber])
;
; This will create a system alarm and place in queue that looks like:
;
; T0 = Nimbus_Alarm_Server
; T1 = Nimbus
; T2 = 10
; T3 =
; T4 = Initial connection to redundant counterpart failed (7)
;
; When this server become active the event will be Inactive (green), when it switches to Standby it will become Active (Red)
;
; Any of the textfields could be contain [ReasonAsString] and [ReasonAsNumber] which will be replaced by the reason the alarm
; event goes active or inactive
;
AlarmEventAtSwitchOver=Nimbus_Alarm_Server,Nimbus,10,,[ReasonAsString] ([ReasonAsNumber])

;
; Redundancy scenarios (reasons) to indicate using the AlarmEventAtSwitchOver setting, these are the same as [ReasonAsNumber]
;
; 0 - Don't indicate any redundancy events
; -1 - Indicate all redundancy events
; 1 - Indicate when we become the active server (inactive alarm event) (during startup)
; 2 - Indicate when we become the standby server (active alarm event) (during startup)
; 3 - Indicate when we become the active server (inactive alarm event)
; 4 - Indicate when we become the standby server (active alarm event)
; 5 - Indicate when the redundant counterpart is connected (inactive alarm event)
; 6 - Indicate when the redundant counterpart is disconnected (active alarm event)
; 7 - Indicate if no contact to redundant counterpart has been established within ReconnectInterval when starting Nimbus
;
; The values may be combined, ex:
;
; IndicatedReasons=1,2,4
;
; The value defaults to 1,2,3,4
;
IndicatedReasons=-1
```